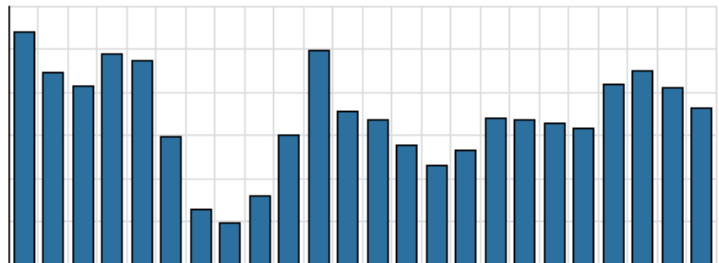


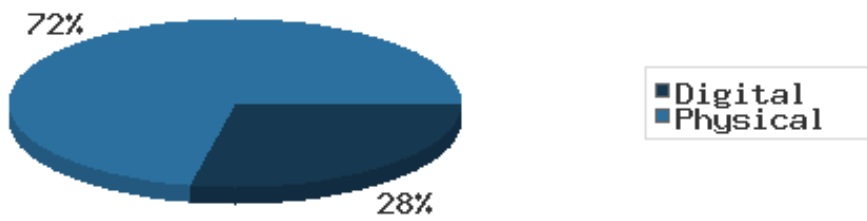
Monthly Stats Brief Narrative

Through September 2021, the number of patrons entering our buildings stayed about the same system-wide compared to this same time year-to-date the previous year. Combined physical and digital use of library materials increased year-to-date compared to 2020. About 7% of our registered cardholders checked out a physical item this past month, while about 2% of registered cardholders checked out a digital item.

District Total Checkouts Over 24 Months



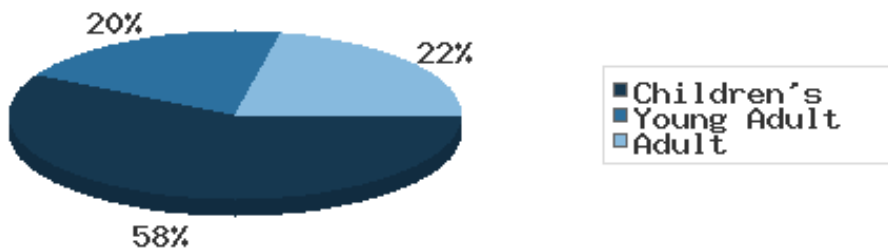
Digital vs. Physical Circulation YTD



Digital usage has comprised about 28% of total materials use year-to-date through September 2021, and digital usage stayed about the same from this time in 2020.

In September 2021, BDL patrons saved \$95,681.00 by checking out 8,165 physical items from the library. Our programming for all ages and our digital services further increase the library's value to the community, bringing the total estimated value to \$113,525.84.

Programs Offered in 2021 YTD



Compared to this time year-to-date 2020, the number of programs BDL offered has greatly increased. Attendance at programs greatly decreased over this same period.

There were a total of 12 visits to the Bronson, Coldwater, Quincy, and Union Twp. branches for curbside service.

See the full statistical report, starting on the next page, for details and more graphs. The most up-to-date stats are always available online and interactive at <https://www.BranchDistrictLibrary.org/stats>.

Attendance

September 2021

	BDL Monthly Total	BDL YTD	BDL Year End (Year-over-Year Change)				
			2020	2019	2018	2017	2016
Attendance	5,949	50,191 (-2%)	63,336 (-66%)	183,677 (-4%)	191,866 (-1%)	193,922 (-4%)	200,991 (+3%)
Hours Open	905.00	7,744.00 (+38%)	7,132.50 (-37%)	11,250.25 (-9%)	12,387.00 (+14%)	10,869.15 (-0%)	10,877.50 (+25%)
Number of Hours Scheduled Open Each Week (Tracking Since 1/2018)	239.00		237.00 (-2%)	241.00 (-2%)	245.00	0.00	0.00

Patrons

September 2021

	BDL Monthly Total	BDL YTD	BDL Year End (Year-over-Year Change)				
			2020	2019	2018	2017	2016
Population in our Service Area (Tracking Since 2018)	44,959	45,008 (avg) (+0%)	44,931 (avg) (-0%)	45,093 (avg) (-0%)	45,113 (avg)	0 (avg)	0 (avg)
Library Card Holders	22,590	22,208 (avg) (+5%)	21,365 (avg) (+4%)	20,493 (avg) (-4%)	21,350 (avg) (-16%)	25,346 (avg) (+3%)	24,554 (avg) (+4%)
Patrons Who Checked Out a Physical Item	1,488	1,322 (avg) (+21%)	1,102 (avg) (-48%)	2,136 (avg) (-2%)	2,180 (avg) (-5%)	2,305 (avg) (-1%)	2,336 (avg) (-1%)
New Library Card Holders Added	75	443 (-64%)	1,304 (+111%)	618 (-39%)	1,021 (+21%)	844 (-15%)	989 (-9%)
In-House Holds Filled for Our Library Card Holders	727	8,205 (+37%)	9,467 (-10%)	10,527 (-4%)	10,987 (-6%)	11,650 (+12%)	10,407 (+2%)
Active Hoopla Users	231	294 (avg) (-12%)	322 (avg) (+11%)	290 (avg) (+14%)	255 (avg) (+50%)	170 (avg) (+92%)	89 (avg)
Active OverDrive Users	222	222 (avg) (-7%)	234 (avg) (+10%)	213 (avg) (+18%)	180 (avg) (+27%)	143 (avg) (-1%)	144 (avg) (-1%)

Physical Collection

Tracking Item-Type Breakdown Since 8/2017

September 2021

	BDL Monthly Total	BDL YTD	BDL Year End (Year-over-Year Change)				
			2020	2019	2018	2017	2016
Physical Books and All other Print Materials in the Catalog	90,792		91,278 (-8%)	98,689 (-2%)	100,253 (-0%)	100,293	0
Physical Audiobooks in the Catalog	1,860		1,949 (+9%)	1,783 (-5%)	1,881 (+2%)	1,852	0
Physical Video Materials in the Catalog	11,568		11,352 (-1%)	11,460 (+8%)	10,579 (+1%)	10,519	0
Physical Music Recordings in the Catalog	42		178 (+12%)	159 (-53%)	337 (-2%)	345	0
TOTAL Physical Items in the Catalog	104,262		105,257 (-6%)	112,053 (-1%)	113,050 (+0%)	113,009 (-11%)	126,407 (-4%)

Digital Collection

Tracking Since 8/2017

September 2021

	BDL Monthly Total	BDL YTD	BDL Year End (Year-over-Year Change)				
			2020	2019	2018	2017	2016
Ebooks in All Digital Collections	561,411		480,691 (+30%)	370,666 (+21%)	306,595 (+33%)	230,178	0
Audiobooks in All Digital Collections	140,016		128,892 (+50%)	86,004 (+19%)	71,995 (+36%)	52,833	0
Video Materials in All Digital Collections	21,457		17,791 (+9%)	16,267 (+14%)	14,229 (-10%)	15,767	0
Music Recordings in All Digital Collections	280,107		273,294 (+1%)	271,614 (+13%)	239,705 (-14%)	280,259	0
Periodicals in All Digital Collections	3,846		3,668	0	0	0	0
TOTAL of All Digital Collections	1,006,837		904,336 (+21%)	744,551 (+18%)	632,524 (+9%)	579,037	0

Total Collection

Tracking Since 8/2017

September 2021

	BDL Monthly Total	BDL YTD	BDL Year End (Year-over-Year Change)				
			2020	2019	2018	2017	2016
Combined Physical Items	104,262		105,257 (-6%)	112,053 (-1%)	113,050 (+0%)	113,009 (-11%)	126,407 (-4%)
Combined Digital Collections	1,006,837		904,336 (+21%)	744,551 (+18%)	632,524 (+9%)	579,037	0
TOTAL of all Collections	1,107,253		1,009,593 (+18%)	856,604 (+15%)	745,574 (+8%)	692,046 (+447%)	126,407 (-4%)

Use of Physical Items

September 2021

	BDL Monthly Total	BDL YTD	BDL Year End (Year-over-Year Change)				
			2020	2019	2018	2017	2016
Checkouts of Cataloged Items	6,092	50,625 (+28%)	52,227 (-53%)	110,285 (-3%)	113,128 (-6%)	120,916 (+2%)	118,595 (-3%)
Renewals of Cataloged Items	705	6,277 (+26%)	7,181 (-47%)	13,490 (-1%)	13,607 (-8%)	14,804 (-4%)	15,480 (+0%)
Items Used in the Library But Not Checked Out	163	1,949 (-67%)	6,404 (+54%)	4,166 (+49%)	2,803 (-8%)	3,050 (+126%)	1,351 (+7,011%)
Checkouts of Uncataloged Items	112	974 (+18%)	1,001 (-70%)	3,294 (-16%)	3,904 (+38%)	2,839 (-38%)	4,578 (+4%)
Requests from BDL Patrons for Items at Other MeLCat Libraries, Actually Fulfilled	577	5,425 (+91%)	4,599 (-53%)	9,873 (+1%)	9,777 (+20%)	8,169 (+15%)	7,112 (+16%)
Requests from Other MeLCat Libraries for Items at BDL, Actually Fulfilled	516	4,178 (+96%)	3,175 (-58%)	7,582 (-23%)	9,810 (+25%)	7,867 (+11%)	7,068 (+46%)
TOTAL Use of Physical Items	8,165	69,428 (+23%)	74,587 (-50%)	148,690 (-3%)	153,029 (-3%)	157,645 (+2%)	154,184 (+1%)

Use of Digital Resources

September 2021

	BDL Monthly Total	BDL YTD	BDL Year End (Year-over-Year Change)				
			2020	2019	2018	2017	2016
OverDrive Checkouts	1,177	9,907 (-1%)	13,051 (+21%)	10,822 (+14%)	9,501 (+21%)	7,823 (+4%)	7,502 (+2%)
Hoopla Checkouts	955	9,530 (-9%)	13,604 (+9%)	12,530 (-2%)	12,796 (+20%)	10,669 (+96%)	5,432
All Other Digital Services	627	7,771 (+19%)	7,140 (-33%)	10,604 (+11%)	9,572 (-72%)	34,047 (-46%)	62,788 (+38%)
TOTAL Use of Digital Resources	2,759	27,560 (-1%)	34,861 (+3%)	33,956 (+7%)	31,869 (-39%)	52,539 (-31%)	75,722 (+43%)

Total Item Usage

September 2021

	BDL Monthly Total	BDL YTD	BDL Year End (Year-over-Year Change)				
			2020	2019	2018	2017	2016
Combined Checkouts of Physical Items	8,165	69,428 (+23%)	74,587 (-50%)	148,690 (-3%)	153,029 (-3%)	157,645 (+2%)	154,184 (+1%)
Combined Use of Digital Resources	2,759	27,560 (-1%)	34,861 (+3%)	33,956 (+7%)	31,869 (-39%)	52,539 (-31%)	75,722 (+43%)
TOTAL Uses of All BDL Items	10,924	96,988 (+15%)	109,448 (-40%)	182,646 (-1%)	184,898 (-12%)	210,184 (-9%)	229,906 (+12%)

Cataloging

September 2021

	BDL Monthly Total	BDL YTD	BDL Year End (Year-over-Year Change)				
			2020	2019	2018	2017	2016
Physical Items Added to the Catalog	694	9,137 (+22%)	9,938 (+2%)	9,719 (-12%)	11,056 (+0%)	11,009 (-1%)	11,091 (+29%)
Physical Items Deleted from the Catalog	439	14,677 (-7%)	17,003 (+58%)	10,769 (-2%)	10,941 (-55%)	24,366 (+53%)	15,968 (+84%)

Reference Questions

September 2021

	BDL Monthly Total	BDL YTD	BDL Year End (Year-over-Year Change)				
			2020	2019	2018	2017	2016
General Reference Questions in Person	554	5,773 (+77%)	4,347 (-50%)	8,748 (+32%)	6,641 (-12%)	7,537 (+20%)	6,285 (+124%)
Questions via Telephone Calls	312	4,300 (+62%)	4,559 (+11%)	4,111 (+6%)	3,866 (-24%)	5,079 (+10%)	4,622 (+60%)
Reference Questions Delivered Online	5	217 (+26%)	243 (-14%)	281 (+85%)	152 (-35%)	233 (-23%)	304 (+34%)
In-Person Questions on Computer or Internet Use	285	2,440 (+2%)	2,767 (-63%)	7,505 (+6%)	7,068 (-3%)	7,285 (+11%)	6,568 (+18%)
In-Person Questions about Our Online Databases	2	97 (+17%)	107 (-69%)	349 (-15%)	409 (+13%)	363 (+114%)	170 (+85%)
In-Person Tax Form Questions	0	232 (-19%)	286 (-12%)	326 (-37%)	518 (+5%)	493 (+4%)	473 (-18%)
TOTAL of All Reference Questions	1,158	13,059 (+48%)	12,309 (-42%)	21,320 (+14%)	18,654 (-11%)	20,990 (+14%)	18,422 (+52%)

Notary Services

Began 9/2017 at Coldwater Only

September 2021

	BDL Monthly Total	BDL YTD	BDL Year End (Year-over-Year Change)				
			2020	2019	2018	2017	2016
Patrons Who Used our Free Notary Services	2	44 (+38%)	46 (-52%)	95 (+44%)	66 (+371%)	14	0
Documents Notarized	2	63 (+50%)	54 (-56%)	124 (+85%)	67 (+253%)	19	0

MeLCat

September 2021

	BDL Monthly Total	BDL YTD	BDL Year End (Year-over-Year Change)				
			2020	2019	2018	2017	2016
Requests from BDL Patrons for Items at Other MeLCat Libraries	568	5,713 (+82%)	5,026 (-52%)	10,538 (+1%)	10,462 (+20%)	8,699 (+14%)	7,643 (+5%)
Requests from BDL Patrons for Items at Other MeLCat Libraries, Actually Fulfilled	577	5,425 (+91%)	4,599 (-53%)	9,873 (+1%)	9,777 (+20%)	8,169 (+15%)	7,112 (+16%)
Requests from Other MeLCat Libraries for Items at BDL	540	4,488 (+59%)	4,067 (-52%)	8,405 (-18%)	10,296 (+29%)	7,994 (+13%)	7,096 (+18%)
Requests from Other MeLCat Libraries for Items at BDL, Actually Fulfilled	516	4,178 (+96%)	3,175 (-58%)	7,582 (-23%)	9,810 (+25%)	7,867 (+11%)	7,068 (+46%)

Programs Held

September 2021

	BDL Monthly Total	BDL YTD	BDL Year End (Year-over-Year Change)				
			2020	2019	2018	2017	2016
Early Childhood Literacy Programs Held (Tracking since 2021)	14	79	0	0	0	0	0
Juvenile Programs Held	32	156 (-58%)	551 (-31%)	804 (+10%)	730 (+1%)	720 (+19%)	604 (+5%)
Young Adult Programs Held	16	63 (-45%)	138 (-55%)	304 (-10%)	338 (+41%)	239 (+47%)	163 (+8%)
Adult Programs Held	5	66 (-63%)	257 (+54%)	167 (+23%)	136 (-7%)	146 (-34%)	220 (+40%)
All-Ages Programs Held (Tracking since 2021)	5	48	0	0	0	0	0
Early Childhood Literacy Summer Reading Programs Held (Tracking since 2021)	0	9	0	0	0	0	0
Juvenile Summer Reading Events Held	0	96	0	173 (+52%)	114 (+20%)	95 (+7%)	89 (+6%)
Young Adult Summer Reading Events Held	0	25	0	61 (+24%)	49 (-14%)	57 (+97%)	29 (-66%)
Adult Summer Reading Events Held	0	27	0	17 (+467%)	3	0	3 (-40%)
All-Ages Summer Reading Programs Held (Tracking since 2021)	0	26	0	0	0	0	0
Computer Classes Held	0	1	1 (-99%)	81 (+305%)	20 (-9%)	22 (+57%)	14 (-36%)
TOTAL of All Programs	72	1,317 (+98%)	947 (-41%)	1,607 (+16%)	1,390 (+9%)	1,279 (+14%)	1,122 (+4%)

Program Attendance

September 2021

	BDL Monthly Total	BDL YTD	BDL Year End (Year-over-Year Change)				
			2020	2019	2018	2017	2016
Attendees at Early Childhood Literacy Programs (Tracking since 2021)	120	1,087	0	0	0	0	0
Attendees at Juvenile Programs	314	2,691 (-86%)	25,317 (+73%)	14,654 (-7%)	15,725 (+2%)	15,351 (+48%)	10,371 (+23%)
Attendees at Young Adult Programs	62	521 (-82%)	3,204 (+29%)	2,489 (-23%)	3,218 (-15%)	3,806 (+276%)	1,011 (+14%)
Attendees at Adult Programs	90	1,657 (-87%)	16,263 (+519%)	2,627 (+33%)	1,970 (-0%)	1,979 (-3%)	2,048 (-5%)
Attendees at All-Ages Programs (Tracking since 2021)	62	3,422	0	0	0	0	0
Attendees at Early Childhood Literacy Summer Reading Programs (Tracking since 2021)	0	146	0	0	0	0	0
Attendees at Juvenile Summer Reading Events	0	1,798	0	4,186 (+8%)	3,864 (+24%)	3,116 (-20%)	3,904 (+56%)
Attendees at Young Adult Summer Reading Events	0	181	0	279 (-16%)	333 (-50%)	671 (+127%)	295 (+14%)
Attendees at Adult Summer Reading Events	0	179	0	310 (+265%)	85	0	21 (-73%)
Attendees at All-Ages Summer Programs (Tracking since 2021)	0	730	0	0	0	0	0
Attendees at Computer Classes	0	1	0	26 (+30%)	20 (-5%)	21 (+75%)	12 (-59%)
TOTAL of All Program Attendance	648	12,413 (-65%)	44,784 (+82%)	24,571 (-3%)	25,215 (+1%)	24,944 (+41%)	17,662 (+23%)

Summer Reading Overview

September 2021

	BDL Monthly Total	BDL YTD	BDL Year End (Year-over-Year Change)				
			2020	2019	2018	2017	2016
Juveniles Signed Up for Summer Reading Program	0	407 (+347%)	91 (-87%)	711 (-5%)	747 (-35%)	1,153 (+19%)	967 (+13%)
Young Adults Signed up for Summer Reading Program	0	77 (+166%)	29 (-78%)	134 (-65%)	378 (-2%)	385 (+241%)	113 (-64%)
Adults Signed Up for Summer Reading Program	0	122 (+270%)	33 (-79%)	159 (-36%)	248 (+112%)	117 (+36%)	86 (+1%)
Juveniles who Completed Summer Reading Program	0	220 (+142%)	91 (-76%)	385 (+48%)	260 (-50%)	518 (+13%)	459 (-10%)
Young Adults who Completed Summer Reading Program	0	38 (+31%)	29 (-63%)	79 (-41%)	135 (-50%)	268 (+332%)	62 (-49%)
Adults who Completed Summer Reading Program	0	30 (-9%)	33 (-72%)	118 (-28%)	165 (+72%)	96 (+60%)	60 (+7%)
Juvenile Summer Reading Events Held	0	96	0	173 (+52%)	114 (+20%)	95 (+7%)	89 (+6%)
Young Adult Summer Reading Events Held	0	25	0	61 (+24%)	49 (-14%)	57 (+97%)	29 (-66%)
Adult Summer Reading Events Held	0	27	0	17 (+467%)	3	0	3 (-40%)
Attendees at Juvenile Summer Reading Events	0	1,798	0	4,186 (+8%)	3,864 (+24%)	3,116 (-20%)	3,904 (+56%)
Attendees at Young Adult Summer Reading Events	0	181	0	279 (-16%)	333 (-50%)	671 (+127%)	295 (+14%)
Attendees at Adult Summer Reading Events	0	179	0	310 (+265%)	85	0	21 (-73%)

Summer Reading Program Signups

September 2021

	BDL Monthly Total	BDL YTD	BDL Year End (Year-over-Year Change)				
			2020	2019	2018	2017	2016
Juveniles Signed Up for Summer Reading Program	0	407 (+347%)	91 (-87%)	711 (-5%)	747 (-35%)	1,153 (+19%)	967 (+13%)
Young Adults Signed up for Summer Reading Program	0	77 (+166%)	29 (-78%)	134 (-65%)	378 (-2%)	385 (+241%)	113 (-64%)
Adults Signed Up for Summer Reading Program	0	122 (+270%)	33 (-79%)	159 (-36%)	248 (+112%)	117 (+36%)	86 (+1%)
TOTAL Summer Reading Program Signups	0	606 (+296%)	153 (-85%)	1,004 (-27%)	1,373 (-17%)	1,655 (+42%)	1,166 (-7%)

Summer Reading Program Completions

September 2021

	BDL Monthly Total	BDL YTD	BDL Year End (Year-over-Year Change)				
			2020	2019	2018	2017	2016
Juveniles who Completed Summer Reading Program	0	220 (+142%)	91 (-76%)	385 (+48%)	260 (-50%)	518 (+13%)	459 (-10%)
Young Adults who Completed Summer Reading Program	0	38 (+31%)	29 (-63%)	79 (-41%)	135 (-50%)	268 (+332%)	62 (-49%)
Adults who Completed Summer Reading Program	0	30 (-9%)	33 (-72%)	118 (-28%)	165 (+72%)	96 (+60%)	60 (+7%)
TOTAL Summer Reading Program Completions	0	288 (+88%)	153 (-74%)	582 (+4%)	560 (-37%)	882 (+52%)	581 (-16%)

Library-Provided Computer Services

September 2021

	BDL Monthly Total	BDL YTD	BDL Year End (Year-over-Year Change)				
			2020	2019	2018	2017	2016
One-hour sessions on Library Wifi	24,437	216,968 (+0%)	284,892 (-40%)	474,750 (+2%)	465,219 (+9%)	425,714 (+4%)	410,437 (+17%)
Desktop, Laptop, and Tablet Computers Available for Public Use	92		88	88 (-1%)	89 (+22%)	73	73
Sessions on Library-Provided Computers	1,211	7,657 (-8%)	9,604 (-73%)	35,720 (-22%)	45,687 (+3%)	44,181 (+6%)	41,513 (-11%)
Hours Library-Provided Computers Used (Tracking Since 2018)	714.73	4,515.44 (-17%)	6,031.58 (-75%)	24,280.36 (-2%)	24,701.55	0.00	0.00
Desktop, Laptop, and Tablet Computers Available for Staff Use	55		52	52 (+4%)	50 (+22%)	41	41

Website Stats

September 2021

	BDL Monthly Total	BDL YTD	BDL Year End (Year-over-Year Change)				
			2020	2019	2018	2017	2016
Monthly Website Sessions	4,035	35,515 (+23%)	41,586 (-28%)	58,161 (+28%)	45,594 (-38%)	73,326 (-2%)	75,139 (+3%)
Monthly Website Page Views	7,774	95,020 (+44%)	92,094 (-29%)	129,778 (+9%)	118,634 (-33%)	177,799 (-2%)	182,084 (+7%)

Faxes, Prints, and Sales

September 2021

	BDL Monthly Total	BDL YTD	BDL Year End (Year-over-Year Change)				
			2020	2019	2018	2017	2016
Fax Pages Received	14	111 (-9%)	149 (-57%)	350 (-16%)	419 (+61%)	260 (+19%)	219 (+27%)
Fax Pages Sent	403	4,391 (+43%)	3,935 (-59%)	9,524 (+3%)	9,249 (+138%)	3,879 (+123%)	1,741 (-7%)
Free Prints for Job Seekers, Students, etc.	309	1,447 (+59%)	1,091 (-61%)	2,796 (-23%)	3,631 (+16%)	3,128 (+9%)	2,878 (+23%)
Black and White Patron Prints (Tracking Since 6/2016)	6,458	41,825 (+63%)	33,177 (-56%)	75,818 (-6%)	81,016 (+7%)	75,606 (+113%)	35,561
Color Patron Prints (Tracking Since 6/2016)	1,449	6,976 (+107%)	4,709 (-58%)	11,299 (-8%)	12,285 (+20%)	10,253 (+154%)	4,036
Flash Drives Sold (Tracking Since 6/2016)	4	14	18 (-51%)	37 (-10%)	41 (-27%)	56 (+4%)	54
Earbuds Sold (Tracking Since 6/2016)	9	100 (-15%)	131 (-72%)	462 (-14%)	538 (+29%)	416 (+151%)	166

Fines and Fees

Overdue Fines Dropped in 2017

September 2021

	BDL Monthly Total	BDL YTD	BDL Year End (Year-over-Year Change)				
			2020	2019	2018	2017	2016
Fines and Fees Payments Received	\$ 103.00	\$ 1,164.93 (-9%)	\$ 1,717.01 (-44%)	\$ 3,092.62 (+28%)	\$ 2,412.73 (-68%)	\$ 7,628.31 (-24%)	\$ 10,062.96 (-30%)
Outstanding Fines and Fees	\$ 5,034.23		53,362.56 (-4%)	55,588.42 (-0%)	55,850.27 (-34%)	84,232.33 (-63%)	228,102.90 (+3%)

Debt Collections

Unique Management Services, Inc.
Tracking Since 2014

September 2021

	BDL Monthly Total	BDL YTD	BDL Year End (Year-over-Year Change)				
			2020	2019	2018	2017	2016
Fine Payments as a Result of Collection Agency's Efforts	\$ 0.00	\$ 0.00	\$ 0.00	\$ 268.00 (-94%)	\$ 4,183.45 (+1,727%)	\$ 229.00 (-76%)	\$ 947.13 (+16%)
Library Materials Returned as a Result of Collection Agency's Efforts	\$ 0.00	\$ 0.00	\$ 0.00	\$ 0.00	\$ 462.00 (-48%)	\$ 888.95 (-33%)	\$ 1,317.93 (-2%)
What We Paid Collection Agency for Their Services	\$ 0.00	\$ 0.00	\$ 0.00	\$ 134.10 (-75%)	\$ 528.66 (-5%)	\$ 558.08 (-45%)	\$ 1,022.23 (-3%)

Value to Our Service Area

Visit <https://www.BranchDistrictLibrary.org/value>
to learn how we determine these numbers.

September 2021

	BDL Monthly Total	BDL YTD	BDL Year End (Year-over-Year Change)				
			2020	2019	2018	2017	2016
Value from Physical Item Checkouts	\$ 95,681.00	\$ 775,253.72 (+26%)	\$ 822,979.52 (-53%)	\$ 1,755,554.08 (-7%)	\$ 1,888,907.75 (-12%)	\$ 2,135,671.28 (+0%)	\$ 2,132,387.79 (-2%)
Value from Attending Programs (Tracking Since 1/2018)	\$ 3,240.00	\$ 61,570.00 (-22%)	\$ 126,690.00 (+7%)	\$ 118,485.00 (-6%)	\$ 125,795.00	\$ 0.00	\$ 0.00
Value from Fax Service (Tracking Since 1/2018)	\$ 417.00	\$ 4,502.00 (+42%)	\$ 4,056.00 (-60%)	\$ 10,205.00 (+6%)	\$ 9,668.00	\$ 0.00	\$ 0.00
Value from Free Prints (Tracking Since 1/2018)	\$ 46	\$ 216 (+59%)	\$ 163 (-61%)	\$ 419 (-23%)	\$ 545	\$ 0	\$ 0
Value from Notary Services (Tracking Since 1/2018)	\$ 10.00	\$ 220.00 (+42%)	\$ 225.00 (-53%)	\$ 475.00 (+44%)	\$ 330.00	\$ 0.00	\$ 0.00
Value from Digital Services (Tracking Since 1/2018)	\$ 11,036.00	\$ 110,240.00 (+0%)	\$ 138,316.00 (+2%)	\$ 135,824.00 (+7%)	\$ 127,476.00	\$ 0.00	\$ 0.00
Value from Using Library Computers (Tracking Since 1/2018)	\$ 2,144.19	\$ 13,546.32 (-17%)	\$ 18,094.74 (-75%)	\$ 72,841.08 (-2%)	\$ 74,104.66	\$ 0.00	\$ 0.00
Value from Using Library Wifi (Tracking Since 1/2018)	\$ 951.30	\$ 12,723.55 (-16%)	\$ 19,942.44 (-40%)	\$ 33,232.50 (+2%)	\$ 32,565.33	\$ 0.00	\$ 0.00
TOTAL Value of Free Library Services	\$ 113,525.84	\$ 978,271.44 (+16%)	\$ 1,130,466.45 (-47%)	\$ 2,127,036.06 (-6%)	\$ 2,259,391.39 (+6%)	\$ 2,135,671.28 (+0%)	\$ 2,132,387.79 (-2%)

Materials Expenditures

Tracking since 2018

September 2021

	BDL Monthly Total	BDL YTD	BDL Year End (Year-over-Year Change)				
			2020	2019	2018	2017	2016
Amount Spent on Books	\$ 10,886.98	\$ 82,851.68 (+52%)	\$ 85,727.68 (+12%)	\$ 76,878.30 (-18%)	\$ 93,763.50	\$ 0.00	\$ 0.00
Amount Spent on Periodicals	\$ 0.00	\$ 525.21 (-43%)	\$ 5,390.61 (-5%)	\$ 5,663.99 (-20%)	\$ 7,085.59	\$ 0.00	\$ 0.00
Amount Spent on Audiovisual Materials	\$ 2,066.14	\$ 12,122.66 (+11%)	\$ 16,992.04 (+13%)	\$ 15,009.96 (-17%)	\$ 17,998.47	\$ 0.00	\$ 0.00
Amount Spent on Digital Resources	\$ 2,130.44	\$ 24,799.49 (+2%)	\$ 31,708.66 (+12%)	\$ 28,412.62 (-35%)	\$ 43,798.90	\$ 0.00	\$ 0.00
TOTAL Spent on All Library Materials	\$ 15,083.56	\$ 120,299.04 (+33%)	\$ 139,818.99 (+11%)	\$ 125,964.87 (-23%)	\$ 162,646.46	\$ 0.00	\$ 0.00

Other Expenditures

Tracking since 2018

September 2021

	BDL Monthly Total	BDL YTD	BDL Year End (Year-over-Year Change)				
			2020	2019	2018	2017	2016
Total Materials Expenditures	\$ 15,083.56	\$ 120,299.04 (+33%)	\$ 139,818.99 (+11%)	\$ 125,964.87 (-23%)	\$ 162,646.46	\$ 0.00	\$ 0.00
Total Staff Expenditures	\$ 71,549.48	\$ 714,770.40 (+2%)	\$ 956,326.38 (-18%)	\$ 1,172,756.92 (-20%)	\$ 1,469,560.33	\$ 0.00	\$ 0.00
Expenditures in other categories	\$ 44,619.05	\$ 627,984.82 (+104%)	\$ 483,894.79 (+37%)	\$ 353,231.25 (-16%)	\$ 422,747.74	\$ 0.00	\$ 0.00
TOTAL Expenditures in all Categories	\$ 116,168.53	\$ 1,383,442.02 (+7%)	\$ 1,819,492.24 (+1%)	\$ 1,797,240.67 (-13%)	\$ 2,054,954.53	\$ 0.00	\$ 0.00

Staffing

September 2021

	BDL Monthly Total	BDL YTD	BDL Year End (Year-over-Year Change)				
			2020	2019	2018	2017	2016
Total BDL Staff	34	35 (avg) (-3%)	36 (avg) (-3%)	37 (avg) (-8%)	40 (avg) (+5%)	37 (avg) (+9%)	34 (avg) (+17%)
BDL Staff with MLS Degree	5	5 (avg)	5 (avg) (+25%)	5 (avg) (-33%)	6 (avg) (+20%)	5 (avg) (+150%)	3 (avg)
Worked Full-Time Equivalents	21.87	22.66 (avg) (-12%)	24.53 (avg) (-4%)	25.78 (avg) (-4%)	26.92 (avg) (+8%)	24.91 (avg) (+41%)	17.90 (avg) (+13%)
Hours of Specialized Training for Staff (Tracking Since 1/2019)	18	448 (-41%)	1,170 (+119%)	534	0	0	0
Hours Volunteers Worked at the Library (Tracking Since 1/2019)	0	68 (+74%)	39 (-96%)	1,065	0	0	0

Outreach Services

Began 2018

September 2021

	BDL Monthly Total	BDL YTD	BDL Year End (Year-over-Year Change)				
			2020	2019	2018	2017	2016
Number of Patrons Served by Outreach Services	5	101 (+531%)	42 (-40%)	70 (-8%)	76 (+2,433%)	3	0
Number of Items Delivered to Outreach Patrons	42	478 (+469%)	242 (+10%)	220 (-64%)	606 (+2,231%)	26	0

Coldwater Branch Heritage Room

Stats part of Coldwater Branch totals above; shown here for convenience.

September 2021

	Heritage Room	BDL YTD	BDL Year End (Year-over-Year Change)				
			2020	2019	2018	2017	2016
Heritage Room Attendance	0	116 (+10%)	105 (-78%)	484 (-34%)	736 (+12%)	658 (-7%)	705 (+51%)
In-Person Reference Questions	0	17 (-79%)	80 (-81%)	412 (-42%)	708 (+29%)	550 (+664%)	72 (+140%)
Reference Telephone Calls	0	80 (+33%)	60 (-74%)	232 (-16%)	277 (-36%)	433 (+15%)	376 (+83%)
Online Reference Questions	0	27 (-21%)	34 (-48%)	65 (+8%)	60 (-5%)	63 (-24%)	83 (+8%)

Coldwater Branch Kids' Place

Stats part of Coldwater Branch totals above; shown here for convenience.

Tracking separately since April 2019.

September 2021

	Kids' Place	BDL YTD	BDL Year End (Year-over-Year Change)				
			2020	2019	2018	2017	2016
Kids' Place Attendance	436	2,981 (+34%)	2,385 (-75%)	9,710	0	0	0
In-Person Reference Questions	36	558 (+230%)	226 (-61%)	575	0	0	0
Reference Telephone Calls	3	179 (+86%)	156 (-30%)	224	0	0	0
Online Reference Questions	0	0	0	0	0	0	0

Coldwater Branch Teen Space

Stats part of Coldwater Branch totals above; shown here for convenience.

Tracking separately since April 2019.

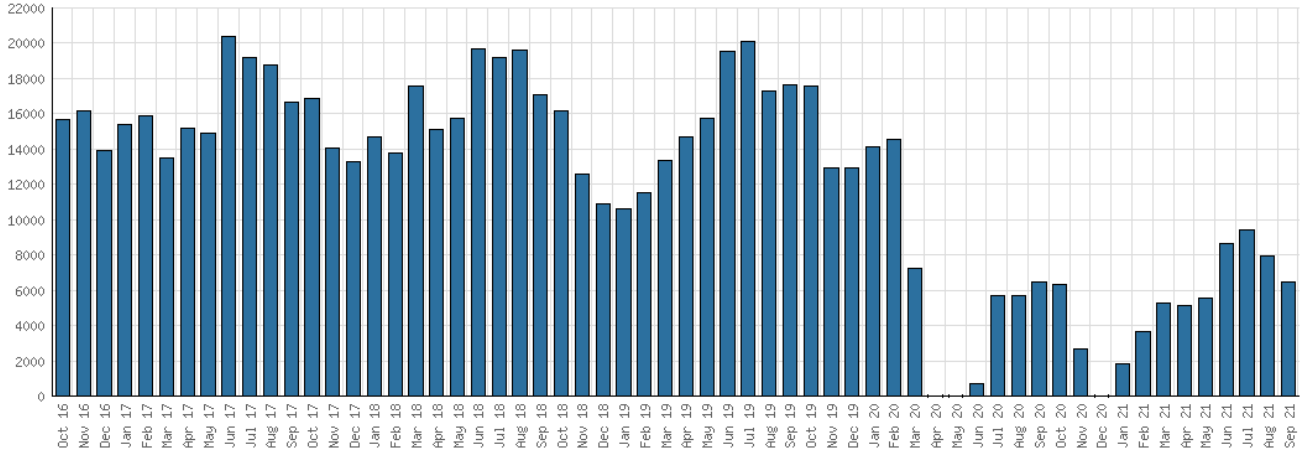
September 2021

	Teen Space	BDL YTD	BDL Year End (Year-over-Year Change)				
			2020	2019	2018	2017	2016
Teen Space Attendance	101	681 (-15%)	845 (-80%)	4,172	0	0	0
In-Person Reference Questions	1	11 (+175%)	4 (-96%)	93	0	0	0
Reference Telephone Calls	0	0	0	0	0	0	0
Online Reference Questions	0	0	0	0	0	0	0

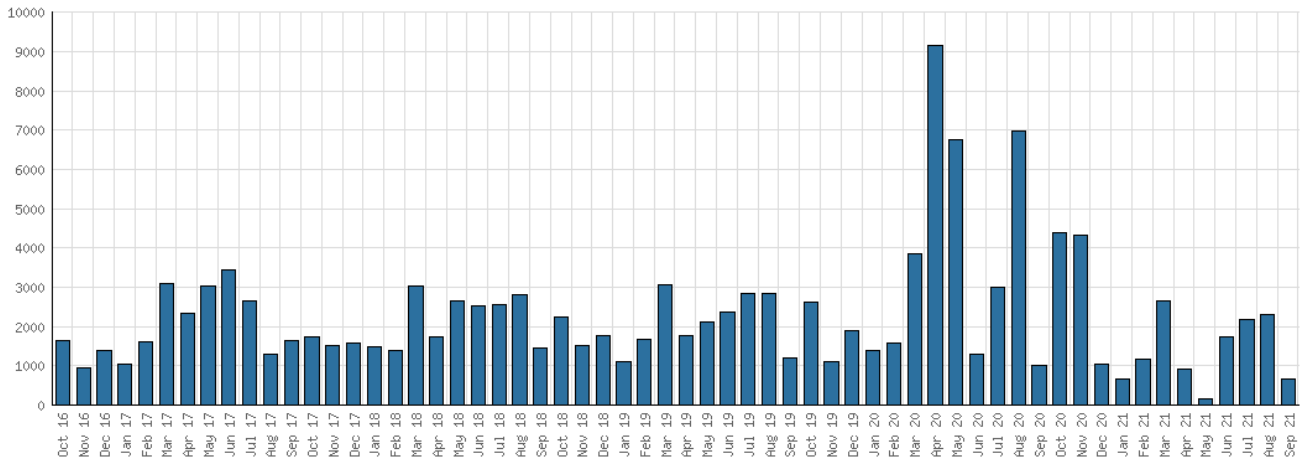
Selected Graphs

5-year Monthly Trends

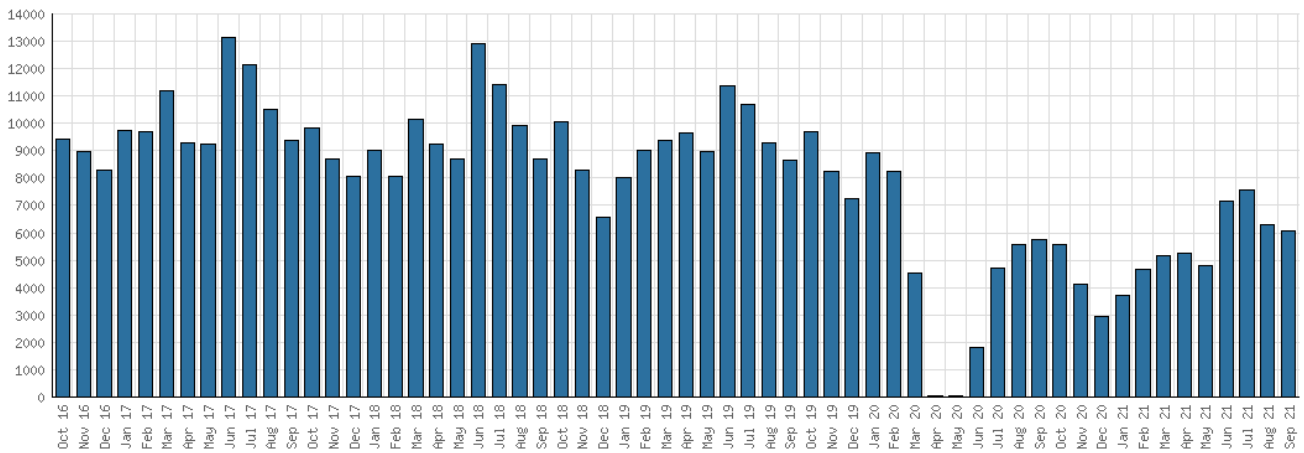
District Attendance



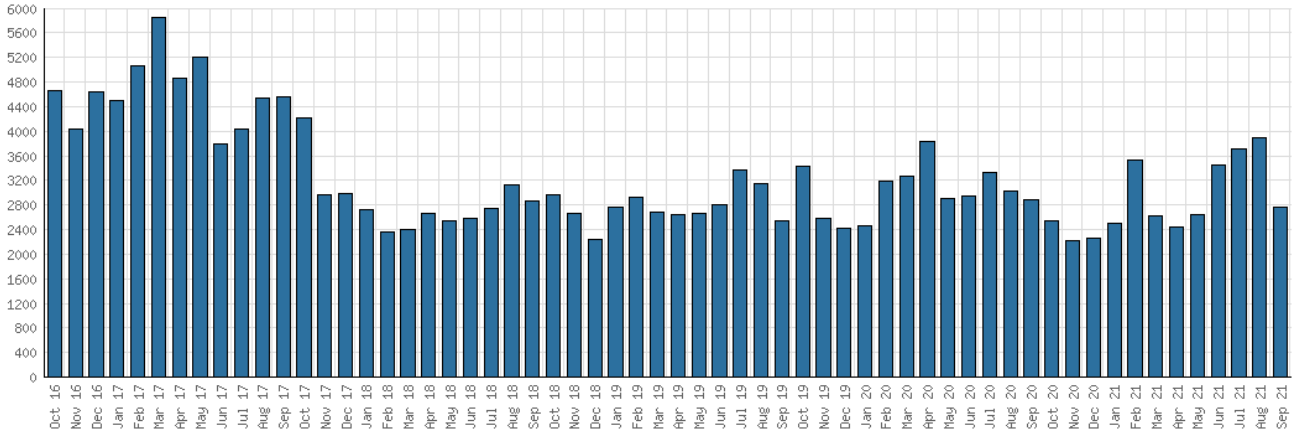
District Program Attendance



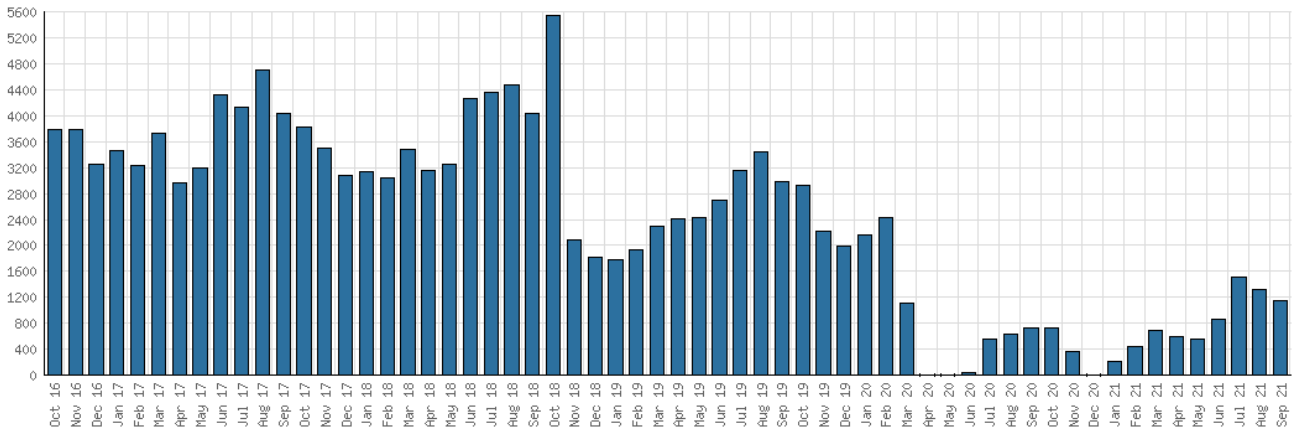
District Physical Checkouts



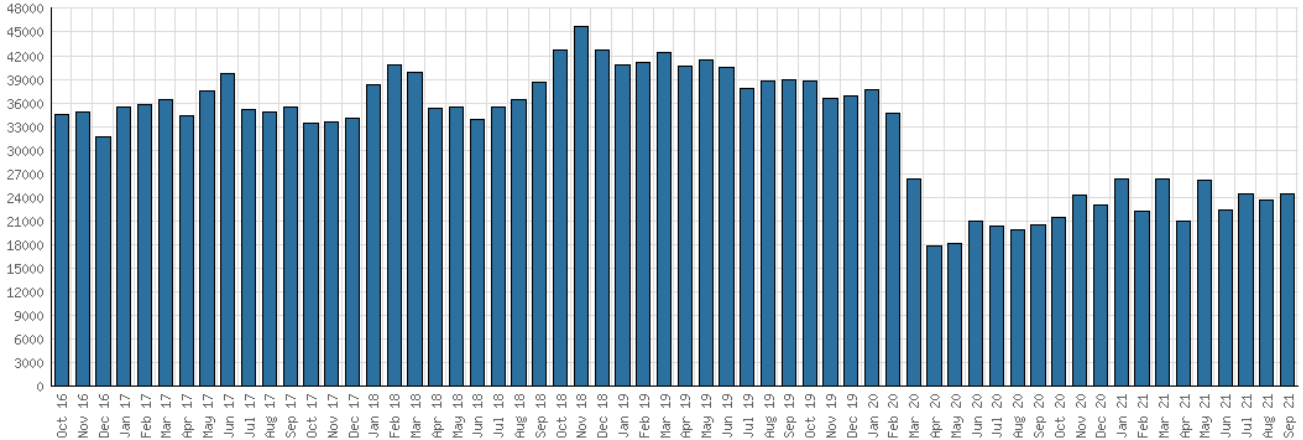
District Digital Usage



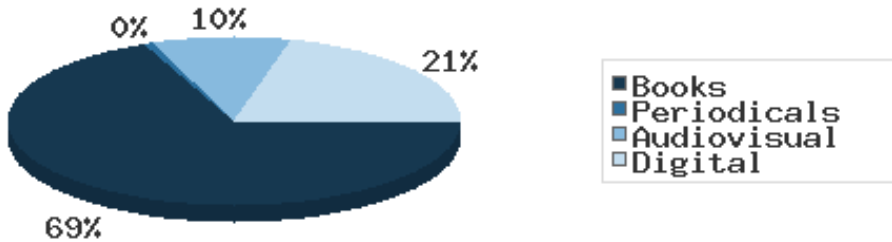
District Use of Library-Provided Computers



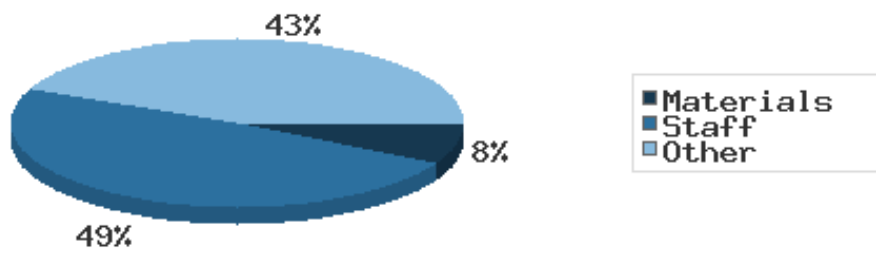
District One-Hour Sessions on Library Wifi



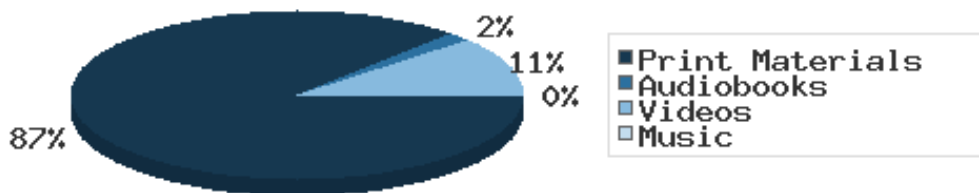
Year-to-Date Materials Expenditures



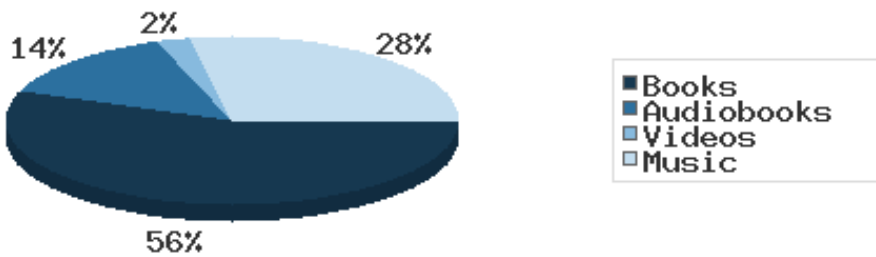
YTD Expenditures in all Categories



Physical Collection



Digital Collection



YTD Usage Breakdown of Digital Services

